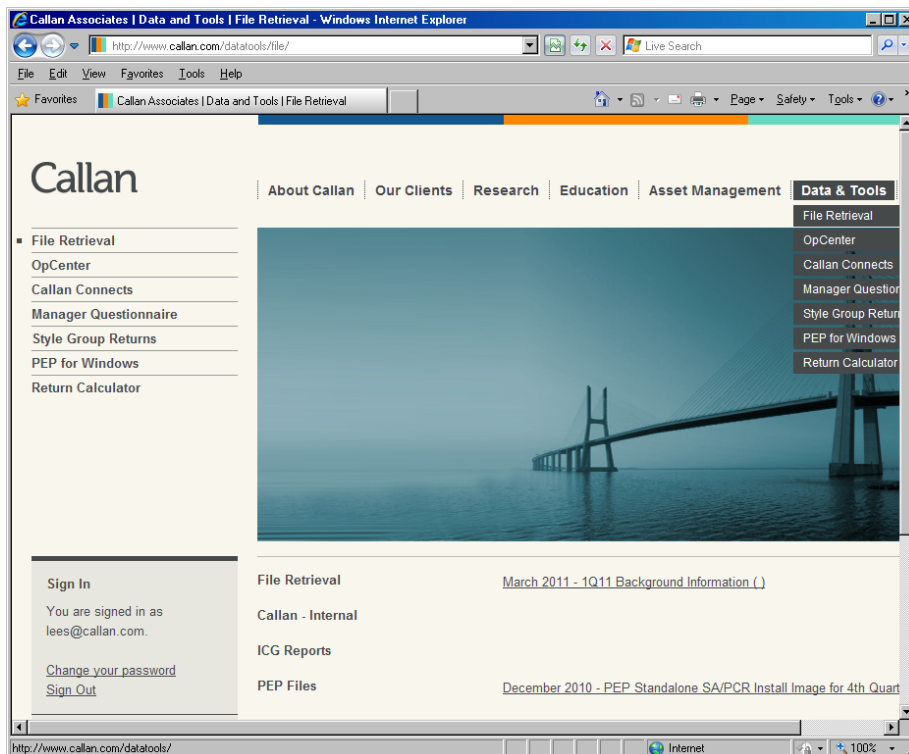
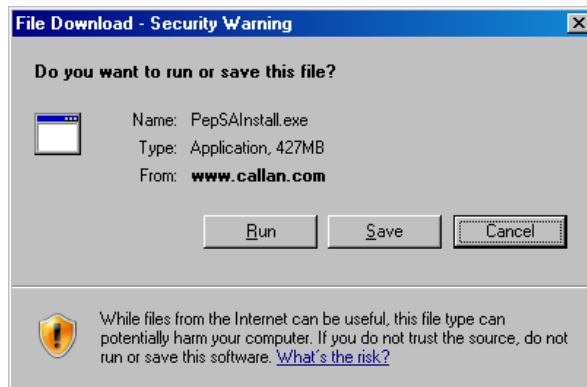


## PEP for Windows Standalone Online Install

We have added the ability to download install files directly from our website, for clients who wish to install the PEP application for another user. For access, go to the file retrieval section on Callan's website to download install and/or update files. This process requires a login and password. Questions about access should be directed to the help desk provided below. To begin the update process, open your web browser to [www.callan.com/datatools/file](http://www.callan.com/datatools/file). Sign in on the left using your User ID and password, then press the "Sign In" button. Files will be listed under the "File Retrieval" heading (see screenshot below). Click on the appropriate link and save the file.



Do **NOT** run the file without saving it first. The file downloaded should be roughly the same size as what is displayed in the security warning.



Phone: 415.291.4191 E-mail: [pep@callan.com](mailto:pep@callan.com)  
101 California Street, Suite 3500 San Francisco, CA 94111 Fax: 415.291.401

**CALLAN ASSOCIATES** INC.

To install *PEP for Windows* on your computer, follow these instructions:

1. Exit all applications that are currently open.
2. Double-click on the PepSAInstall.exe file that was just downloaded. Choose **Run** from the Security Warning window (which may appear if using Internet Explorer).



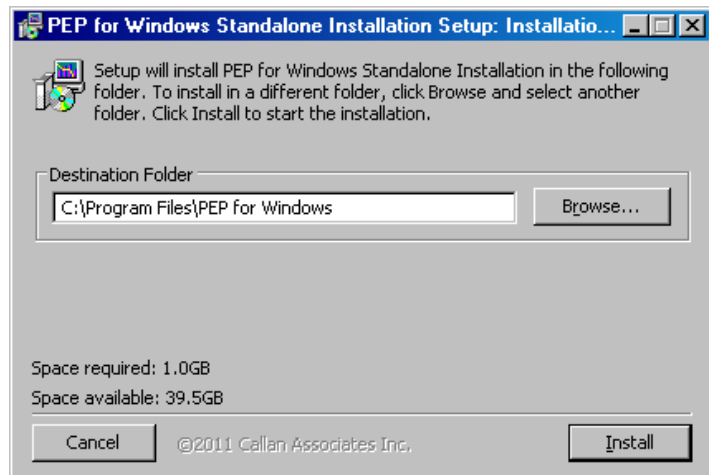
3. Designate a destination for the program to install the necessary files. The default folder is "C:\Program Files\PEP for Windows\," but can be changed by clicking the "Browse" button. After selecting the appropriate destination, click the "Install" button.

**\*\*Windows 7 users are highly recommended to select a folder outside of Program Files due to security restrictions\*\***

Next, the install program will transfer the necessary files. A status bar as well as the name of each sub-process will appear above the status bar. When the program finishes, the screen will read "Completed" when the process is complete.

At that time, click the "Close" button.

Launch the PEP for Windows application by double-clicking on the desktop icon.



y:\pepl\projects\version 10\sa\_install\_online.doc  
3/9/11

**Analytical Solutions Group**

**Phone: 415.291.4191**                      **E-mail: pep@callan.com**  
101 California Street, Suite 3500 San Francisco, CA 94111 Fax: 415.291.4018

**CALLAN ASSOCIATES**<sub>INC.</sub>