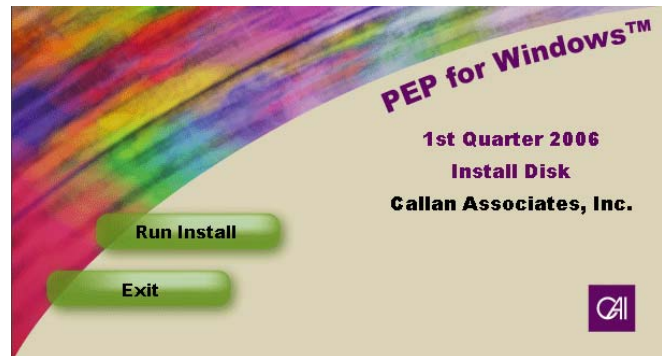


PEP for Windows Standalone Installation

To install *PEP for Windows* on your computer, follow these instructions:

1. Exit all applications that are currently open.
2. Insert the *PEP for Windows* install disk into the appropriate drive. Choose **Run Install** from the Splash Screen.

If you fail to see the splash screen, go to the Start Menu, choose the Run command, and type in `d:\autorun` (substitute the appropriate drive letter for d depending on the location of your CD-ROM drive).

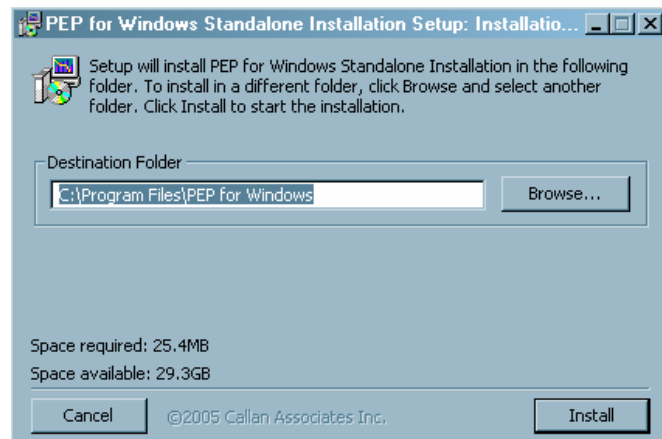


3. Designate a destination for the program to install the necessary files. The default folder is "C:\Program Files\PEP for Windows,\" but can be changed by clicking the "Browse" button. After selecting the appropriate destination, click the "Install" button.

Next, the install program will transfer the necessary files. A status bar as well as the name of each sub-process will appear above the status bar. When the program finishes, the screen will read "Completed" when the process is complete.

At that time, click the "Close" button.

Launch the PEP for Windows application by double-clicking on the desktop icon.



Note: It is NOT recommended to archive installation discs. For new installs, please contact the PEP Help Desk.

y:\pep\projects\web\instructions\sa_update.doc
7/23/09

Analytical Solutions Group

Phone: 415.291.4191 E-mail: pep@callan.com
101 California Street, Suite 3500 San Francisco, CA 94111 Fax: 415.291.4018

CALLAN ASSOCIATES_{INC.}